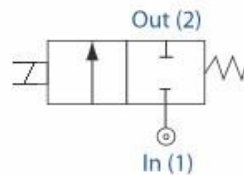


21 Series 2/2 Normally Closed



Features & Benefits

- Direct acting
- Compact Valve Design
- Wide range of available orifices
- Zero Pressure Rated
- Choice of Valve Body Material and Seals
- Exd and Exm Options
- Choice of electrical connections
- Suitable for vacuum applications
- Valve operation is not affected by mounting position
- Response time 5-25ms

Electrical Characteristics

Available Voltage DC (-):	12v, 24v, 110v
Available Voltage AC 50Hz (-):	24v, 110v, 120v, 230v
Available Voltage AC 60Hz (-):	24v, 120v, 220v
Voltage tolerance:	+10% or -10%
Duty Cycle:	100% ED
Protection Class (Std):	IP65 (BS EN 60529) (plug supplied as standard)
Electrical Connection (Std):	PG9 Din Connector DIN 43650/ISO 4400 (EN 175301-803) Form 'A'
Coil Insulation:	Class H (BS EN 60085) 180°C (E5 type)
Power Rating:	19VA, 14.5 watts

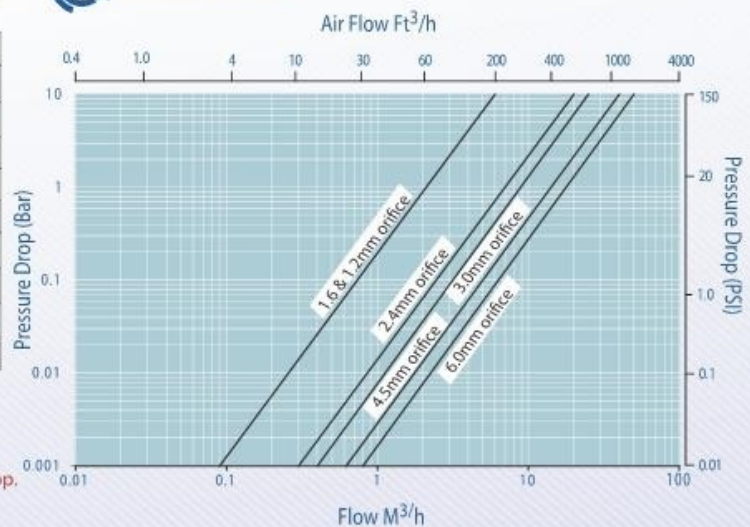
Features

Pipe Size	Qn	OPD (Bar)		P.Max Bar	Orifice mm	Cat No.
		AC Voltages	DC Voltages			
1/8"	30	0 - 100	0 - 100	100	1.2	21192115
1/8"	34	0 - 45	0 - 40	60	1.6	21112115
1/8"	117	0 - 20	0 - 20	60	2.4	21122115
1/8"	150	0 - 15	0 - 10	60	3.0	21132115
1/4"	30	0 - 100	0 - 100	100	1.2	21292115
1/4"	34	0 - 45	0 - 40	60	1.6	21212115
1/4"	117	0 - 20	0 - 20	60	2.4	21222115
1/4"	150	0 - 15	0 - 10	60	3.0	21232115
1/4"	250	0 - 7.0	0 - 5.5	60	4.5	21242115
1/4"	300	0 - 4.0	0 - 2.7	60	6.0	21252115

Specifications

Function:	Normally Closed, Energise to open
Ambient Temperature:	-10°C to +50°C
Maximum Viscosity:	115 SSU
Body Material (Std):	Brass CZ122
Flange Tube:	Stainless Steel 303
Plunger and Top Stop:	Stainless Steel 430FR
Springs:	Stainless Steel 302
Seal Material (Std):	Nitrile (BunaN)
Connection Type (Std):	BS21
Shading Coil:	Copper

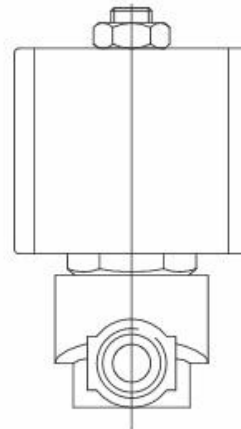
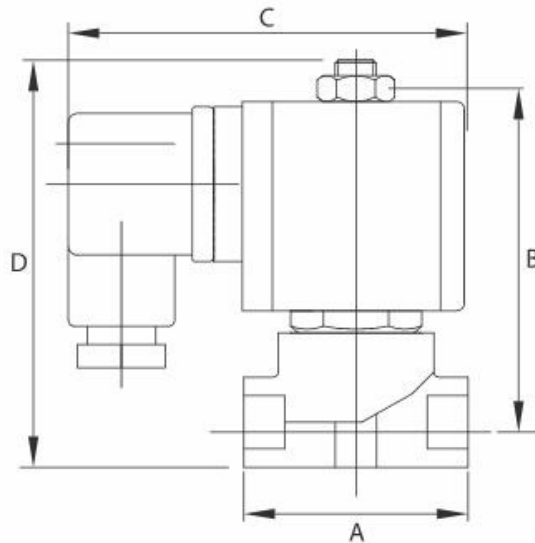
Flow Data



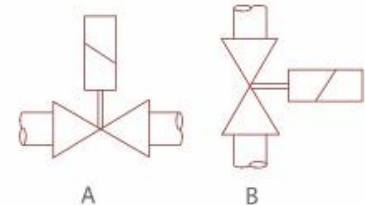
How to use the Flow Chart

1. Select the required flow.
2. Note the corresponding orifices/model and pressure drop.
3. Using orifices/model, (refer to the Features panel) for technical information

21 Series 2/2 Normally Closed



Mounting



Dimensions

Size	A	B	C	D	Weight (Kg)
1/8"	44	70	75	80	0.4
1/4"	44	70	75	80	0.4

Dimensions given in mm

Note:

- Tested in accordance with BS EN 12266-1
- PED Compliant

Solenoid Coil may be rotated to any angle.

Options

Solenoid Enclosure		
Protection Class	Electrical Entry	Ambient
EExd T6 (IP67)	M20 X 1.5 Female	-50°C to +40°C
EExd T4 (IP67)	M20 X 1.5 Female	-50°C to +70°C
Exm T5 (IP65)	M16 X 1.5 Male FLYING LEAD	-20°C to +40°C
EExia	M20 X 1.5	-40°C to +65°C

Body Material
Stainless Steel 316

Seal Material	Media Temperature Range
EPDM	-50°C to +120°C
Viton	-20°C to +150°C

See solenoid enclosures for specific details

Manual Override Option

Mounting Bracket Option Available

LED power indicator option

See corrosion reference guide and sealing solutions for material compatibility

Morrel International S.r.l.

Tel. +39 023560433

Tel. +39 023560452

Fax +39 023562627

E-mail: morrel_int_srl@yahoo.it