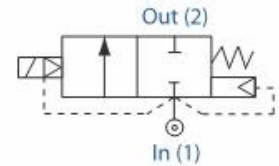


ACDLSS Series Exd & Exm 2/2 Normally Closed



Features & Benefits

- Robust Valve Design
- Diaphragm Operation
- Fully Ported Orifices for high Kv
- Choice of Valve Body Material and Seals
- Sizes 3/8" - 3/4" Advantica approved to BS EN 60730-2-8 for household use.
- ATEX approved
- Response time 60-150ms



Electrical Characteristics

Coil Voltage DC (=):	24v, 110v
Coil Voltage AC 50Hz (~):	110v, 230v
Voltage tolerance:	+10% or -10%
Duty Cycle:	100% ED
Protection Class (Exd):	Exd IIC T6 (-50°C to +40°C) (IP67 BS EN 60529)
Protection Class (Exm):	Exm II 2 GT5 (-20°C to +40°C) (IP65 BS EN 60529)
Electrical Connection (Exd):	M20 x 1.5-6HAS 1721 I.S.O METRIC FINE
Electrical Connection (Exm):	M16 x 1.5-6H AS 1721 I.S.O METRIC FINE + 2m lead
Coil Insulation:	Class H (BS EN 60085) 180°C (E5 type)
Power Rating:	14.5 watts, 19VA

Specifications

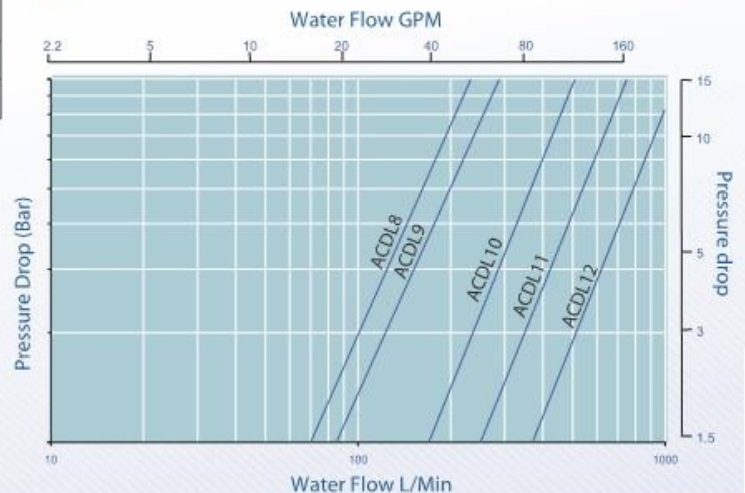
Function:	Normally Closed, Energise to open
Ambient Temperature:	-10°C to +40°C
Maximum Viscosity:	115 SSU
Body Material:	Stainless Steel
Flange Tube:	Stainless Steel 303
Plunger and Top Stop:	Stainless Steel 430FR
Springs:	Stainless Steel 302
Seal Material (Std):	Nitrile (BunaN)
Connection Type (Std):	BS21
Shading Coil:	Silver

Features

Pipe Size	Kv	OPD (Bar)		P.Max Bar	Orifice mm	Cat No:
		AC Voltages	DC Voltages			
1¼"	14.00	0.7 - 10.0	0.7 - 10.0	40.00	28.00	ACDL8SSEXD
1½"	17.30	0.7 - 10.0	0.7 - 10.0	40.00	34.00	ACDL9SSEXD
2"	30.50	0.7 - 10.0	0.7 - 10.0	40.00	45.00	ACDL10SSEXD
2½"	45.00	0.7 - 10.0	0.7 - 10.0	40.00	60.00	ACDL11SSEXD
3"	66.00	0.7 - 10.0	0.7 - 10.0	40.00	72.00	ACDL12SSEXD
1¼"	14.00	0.7 - 10.0	0.7 - 10.0	40.00	28.00	ACDL8SSEXM
1½"	17.30	0.7 - 10.0	0.7 - 10.0	40.00	34.00	ACDL9SSEXM
2"	30.50	0.7 - 10.0	0.7 - 10.0	40.00	45.00	ACDL10SSEXM
2½"	45.00	0.7 - 10.0	0.7 - 10.0	40.00	60.00	ACDL11SSEXM
3"	66.00	0.7 - 10.0	0.7 - 10.0	40.00	72.00	ACDL12SSEXM

Kv = Flow (M³/hr) of water @ 1bar pressure drop

Flow Data



How to use the Flow Chart

1. Select the required flow.
2. Note the corresponding orifices/model and pressure drop.
3. Using orifices/model, (refer to the Features panel) for technical information

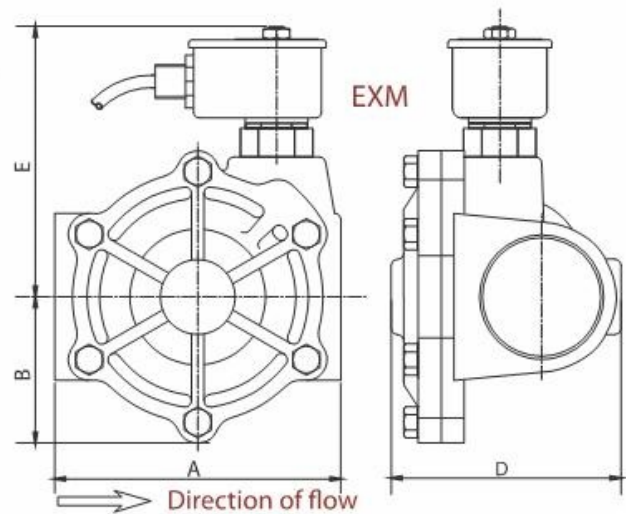
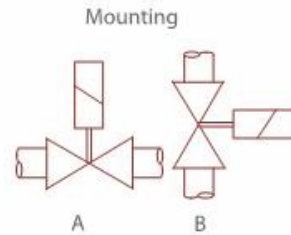
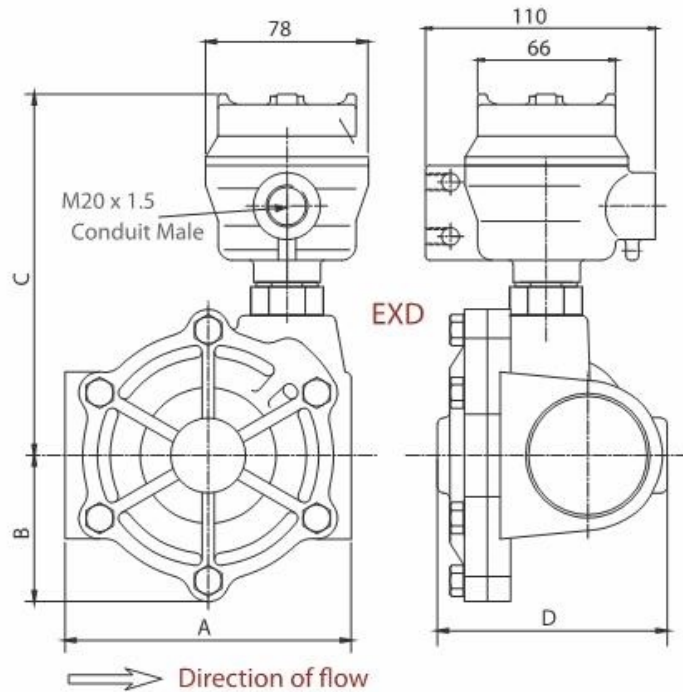
Morrel International S.r.l.

Tel. +39 023560433

Tel. +39 023560452

Fax +39 023562627

E-mail: morrel_int_srl@yahoo.it



Solenoid Coil may be rotated to any angle.

Note:

- Tested in accordance with BS EN 12266-1
- PED Compliant

Dimensions

Dimensions given in mm

Size	A	B	C	D	E	Weight (Exd)	Weight (Exm)
1¼"	100	45	146	90	90	2.9Kg	2.6Kg
1½"	118	56.5	142	97	97	3.0Kg	2.7Kg
2"	137	70	153	117	117	4.4Kg	4.2Kg
2½"	172	89	157	143	143	5.7Kg	5.4Kg
3"	195	94	167	156	156	6.9Kg	6.7Kg

Options

Solenoid Enclosure		
Protection Class	Electrical Entry	Ambient
EExd T6 (IP67)	M20 X 1.5-6H AS 1721 I.S.O Metric Fine	-50°C to +40°C

Seal Material	Media Temperature Range
EPDM	-50°C to +120°C
Viton	-20°C to +150°C

See corrosion reference guide and sealing solutions for material compatibility

See solenoid enclosures for specific details
CSA and IECEx options

Morrel International S.r.l.

Tel. +39 023560433

Tel. +39 023560452

Fax +39 023562627

E-mail: morrel_int_srl@yahoo.it