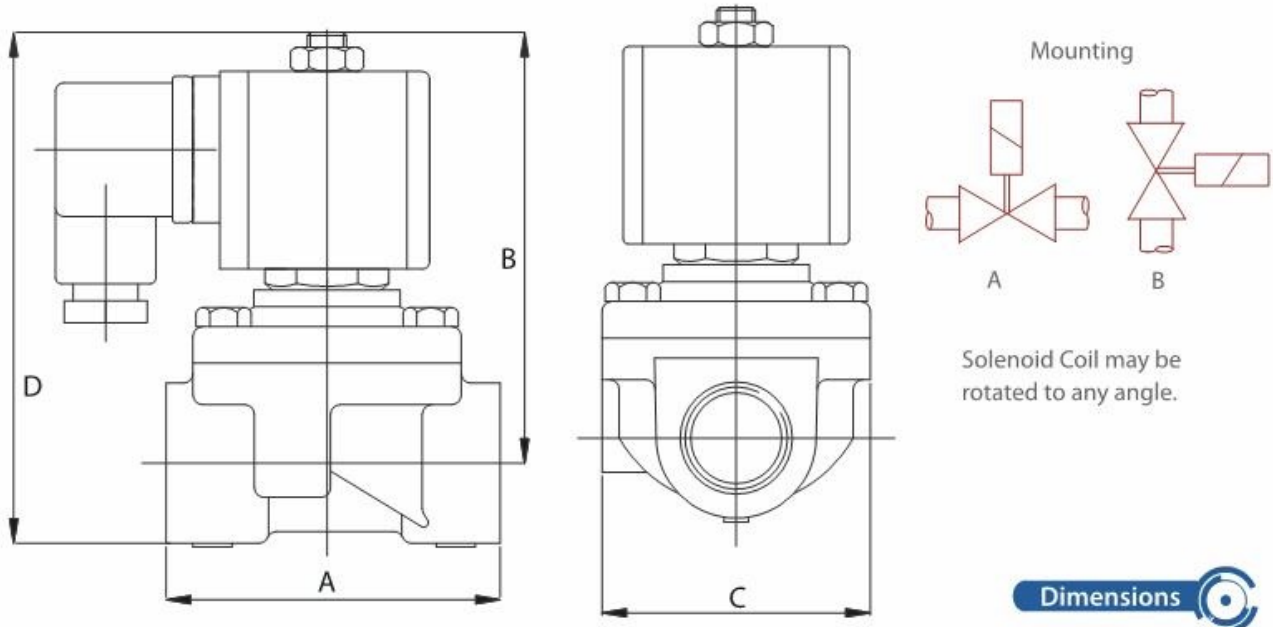


ACDe Series 2/2 Normally Closed



Note:

- Tested in accordance with BS EN 12266-1
- PED Compliant

Size	A	B	C	D	Weight (Kg)
3/8" - 3/4"	69.5	80	75	97	0.90
1"	85	80	75	126	1.20

Dimensions given in mm

ANSI and PN flange connections available

Mounting bracket option available

LED power indicator option

Morrel International S.r.l.

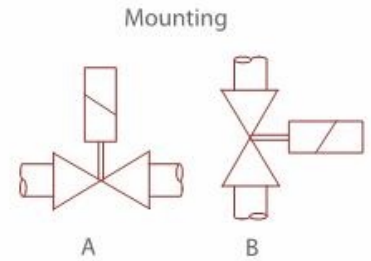
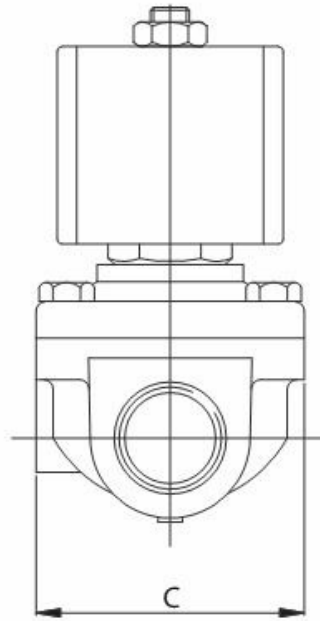
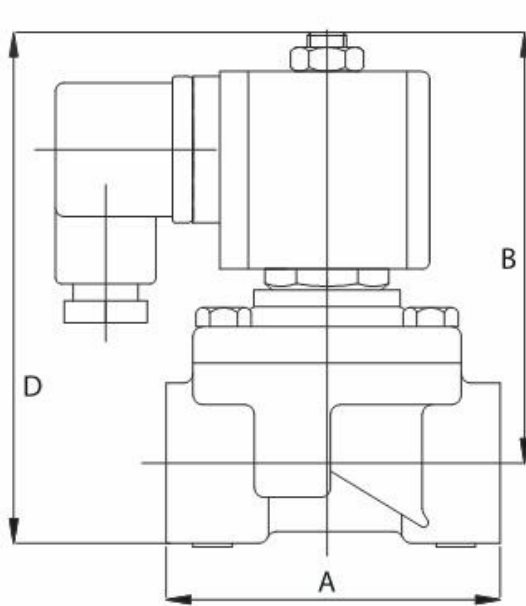
Tel. +39 023560433

Tel. +39 023560452

Fax +39 023562627

E-mail: morrel_int_srl@yahoo.it

ACDe Series
2/2 Normally Closed



Solenoid Coil may be rotated to any angle.

Dimensions 

Size	A	B	C	D	Weight (Kg)
3/8" - 3/4"	69.5	80	75	97	0.90
1"	85	80	75	126	1.20

Dimensions given in mm

Note:

- Tested in accordance with BS EN 12266-1
- PED Compliant

ANSI and PN flange connections available

Mounting bracket option available

LED power indicator option

Morrel International S.r.l.

Tel. +39 023560433

Tel. +39 023560452

Fax +39 023562627

E-mail: morrel_int_srl@yahoo.it