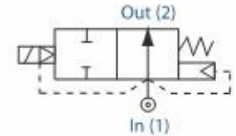


ACPN Series Exd & Exm 2/2 Normally Open



Features & Benefits

- Heavy Duty Valve Design
- Piston Operation
- Wide Temperature Range Capabilities
- Choice of Valve Body Material and Seals
- ATEX approved
- Response time up to 1" 40-100ms
- Response time up to 2" 40-1000ms



Electrical Characteristics

Coil Voltage DC (=):	24v, 110v
Coil Voltage AC 50Hz (~):	110v, 230v
Voltage tolerance:	+10% or -10%
Duty Cycle:	100% ED
Protection Class (Exd):	Exd IIC T6 (-50°C to +40°C) (IP67 BS EN 60529)
Protection Class (Exm):	Exm II 2 G T5 (-20°C to +40°C) (IP65 BS EN 60529)
Electrical Connection (Exd):	M20 x 1.5-6HAS 1721 I.S.O METRIC FINE
Electrical Connection (Exm):	M16 x 1.5-6H AS 1721 I.S.O METRIC FINE + 2m lead
Coil Insulation:	Class H (BS EN 60085) 180°C (E5 type)
Power Rating:	14.5 watts, 19VA

Specifications

Function:	Normally Open, Energise to close
Ambient Temperature:	-10°C to +40°C
Maximum Viscosity:	115 SSU
Body Material 3/8" - 1":	Brass CZ122
Body Material 1 1/4" - 2":	Bronze DIN1705
Flange Tube:	Stainless Steel 303
Plunger and Top Stop:	Stainless Steel 430FR
Springs:	Stainless Steel 302
Seal Material (Std):	Nitrile (BunaN)
Connection Type (Std):	BS21
Shading Coil:	Copper

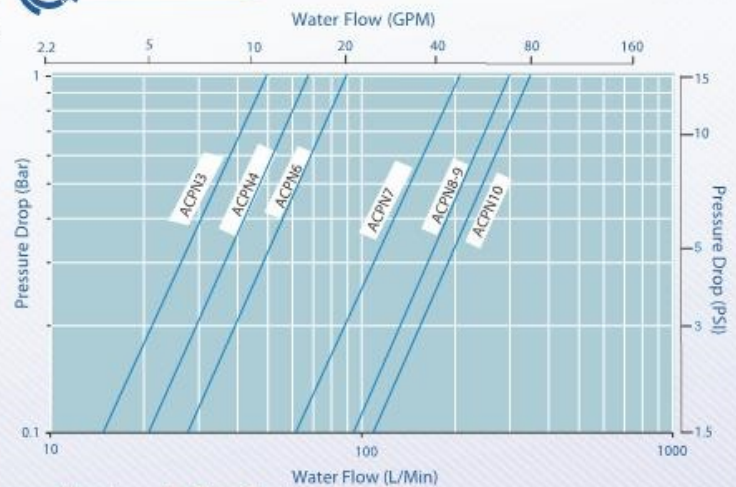
Features

Pipe Size	Kv	OPD (Bar)		P.Max (Bar)	Orifice (mm)	Cat No.
		AC Voltages	DC Voltages			
3/8"	3	0.3 - 10	0.3 - 10	50	16.00	ACPN3EXD
1/2"	4.2	0.3 - 10	0.3 - 10	50	16.00	ACPN4EXD
3/4"	5.4	0.3 - 10	0.3 - 10	50	16.00	ACPN6EXD
1"	12.5	0.3 - 10	0.3 - 10	50	25.00	ACPN7EXD
1 1/4"	18	0.3 - 10	0.3 - 10	50	30.00	ACPN8EXD
1 1/2"	18	0.3 - 10	0.3 - 10	50	30.00	ACPN9EXD
2"	21	0.3 - 10	0.3 - 10	50	32.00	ACPN10EXD

Pipe Size	Kv	OPD (Bar)		P.Max (Bar)	Orifice (mm)	Cat No.
		AC Voltages	DC Voltages			
3/8"	3	0.3 - 10	0.3 - 10	50	16.00	ACPN3EXM
1/2"	4.2	0.3 - 10	0.3 - 10	50	16.00	ACPN4EXM
3/4"	5.4	0.3 - 10	0.3 - 10	50	16.00	ACPN6EXM
1"	12.5	0.3 - 10	0.3 - 10	50	25.00	ACPN7EXM
1 1/4"	18	0.3 - 10	0.3 - 10	50	30.00	ACPN8EXM
1 1/2"	18	0.3 - 10	0.3 - 10	50	30.00	ACPN9EXM
2"	21	0.3 - 10	0.3 - 10	50	32.00	ACPN10EXM

Kv = Flow (M³/hr) of water @ 1bar pressure drop

Flow Data



How to use the Flow Chart

1. Select the required flow.
2. Note the corresponding orifices/model and pressure drop.
3. Using orifices/model, (refer to the Features panel) for technical information

Morrel International S.r.l.

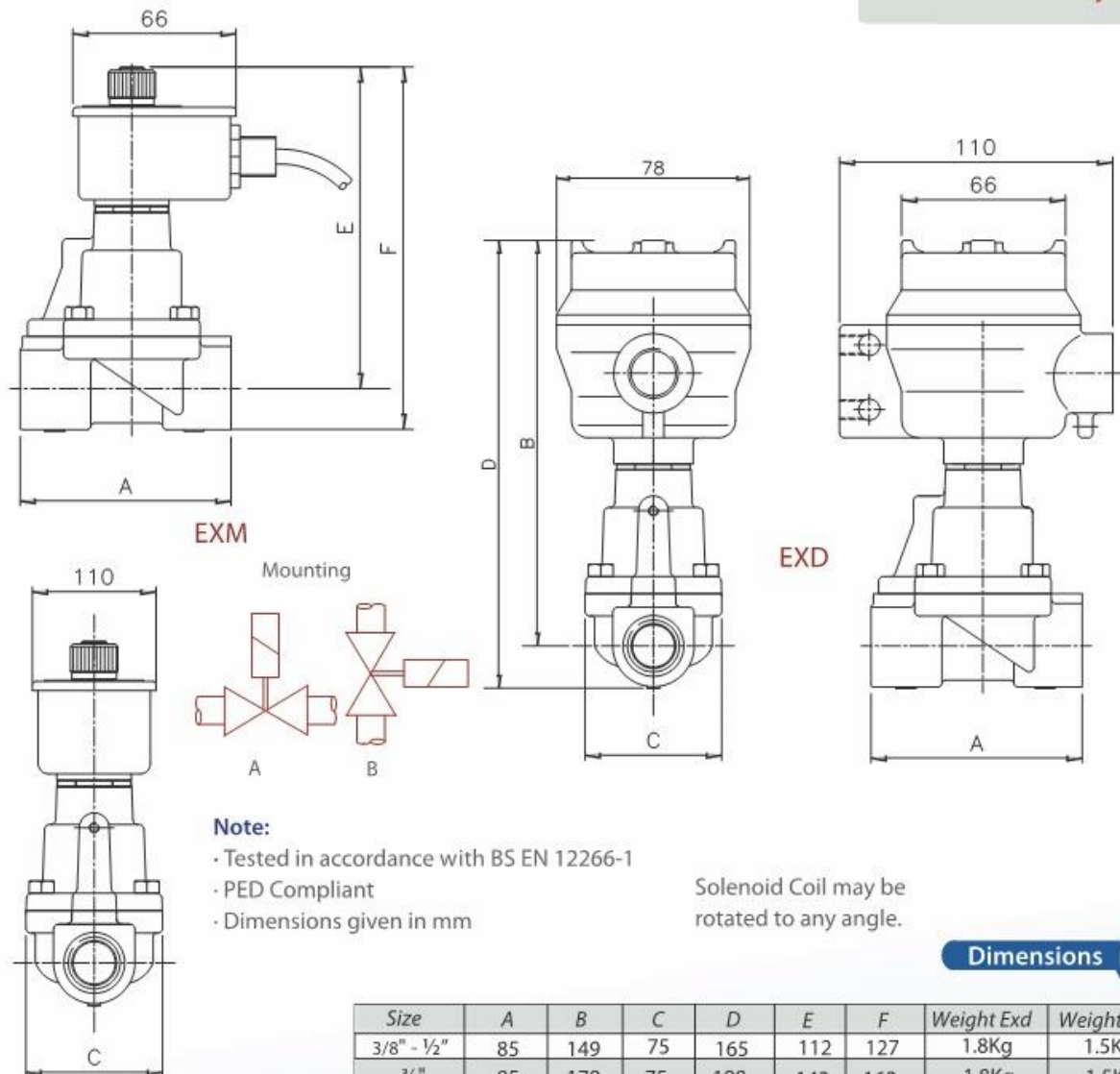
Tel. +39 023560433

Tel. +39 023560452

Fax +39 023562627

E-mail: morrel_int_srl@yahoo.it

ACPN Series Exd & Exm 2/2 Normally Open



Dimensions

Size	A	B	C	D	E	F	Weight Exd	Weight Exm
3/8" - 1/2"	85	149	75	165	112	127	1.8Kg	1.5Kg
3/4"	85	179	75	198	142	162	1.8Kg	1.5Kg
1"	85	179	75	198	142	162	2.8Kg	2.5Kg
1 1/4" - 1 1/2"	117	133	82.5	209	82.5	209	3.5Kg	3.2Kg
2"	146	145	103	209	103	209	5.7Kg	5.4Kg

Options

Solenoid Enclosure		
Protection Class	Electrical Entry	Ambient
EExd T6 (IP67)	M20 X 1.5 Female	-50°C to +40°C
EExd T4 (IP67)	M20 X 1.5 Female	-50°C to +70°C
Exm T5 (IP65)	M16 X 1.5 Male FLYING LEAD	-20°C to +40°C

Body Material
Stainless Steel 316

Seal Material	Media Temperature Range
EPDM	-50°C to +120°C
Viton	-20°C to +150°C
PTFE	-200°C to +180°C

See solenoid enclosures for specific details
ANSI and PN flange connections available
CSA and IECEx options

See corrosion reference guide and
sealing solutions for material compatibility

Morrel International S.r.l.

Tel. +39 023560433

Tel. +39 023560452

Fax +39 023562627

E-mail: morrel_int_srl@yahoo.it