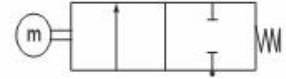


HWA Series Normally Closed



Features & Benefits

- Approved for mains gas safety shut off
- Suitable for automatic burners
- Suitable for fire protection systems
- Ideal for low pressure Natural gas
- Approved to **EN161**
- Compliant with Gas Appliance directive
- Fully ported orifices for high flow
- Zero pressure rated
- Slow opening
- Open and closed position volt free contacts available
- Fitted with pressure test points as standard
- Visual position indication as standard



Features

Pipe Size	KV	OPD (mBar)	P.Max (Bar)	Hold VA	Orifice mm	Weight Kg	Cat No
1¼"	46.5	0 -345	5	10	68.00	9.60	HWA8A
1½"	46.5	0 -345	5	10	68.00	9.60	HWA9A
2"	82	0 -345	5	10	68.00	9.60	HWA10A
2" Flanged	82	0 -345	5	10	68.00	11.60	HWA10FB
2½"	135	0 -345	5	10	87.00	10.5	HWA11A
2½" Flanged	135	0 -345	5	10	87.00	13.1	HWA11FB
3"	162	0 -345	5	10	87.00	10.5	HWA12A
3" Flanged	162	0 -345	5	10	87.00	13.4	HWA12FB
4"	195	0 -345	5	10	104.00	38.4	HWA13FB
6"	365	0 - 200	5	10	154.00	62.4	HWA15FB

Specifications

Function:	Normally Closed, Energise to open
Ambient Temperature:	-0°C to +60°C
Body Material upto 3":	Aluminium
Body material above 3":	Cast iron
Closing Time:	Less than 1 second
Springs:	Stainless Steel 302
Seal Material (Std):	Nitrile (BunaN)
Connection Type (Std):	BS21 & flanged PN6/16

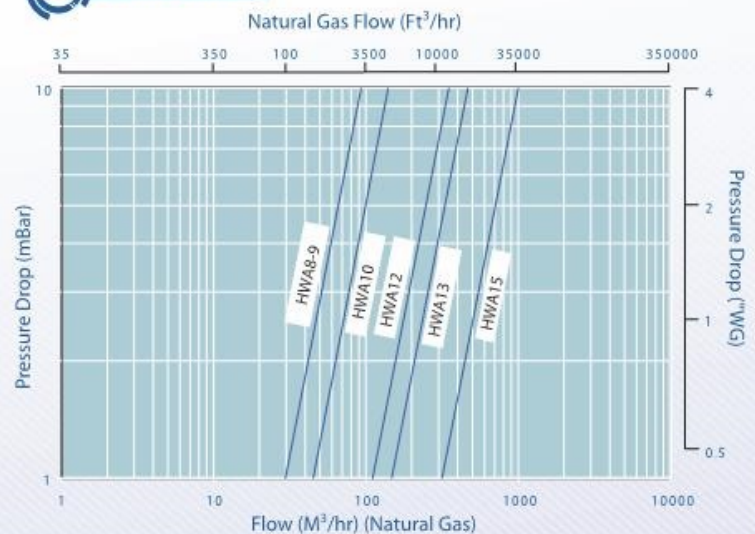
Electrical Characteristics

Coil Voltage DC (=):	12v, 24v, 110v
Coil Voltage AC 50Hz (~):	110v, 230v
Voltage tolerance:	+10% or -10%
Protection Class (Std):	IP50 (BS EN 60529)
Electrical Connection (Std):	Suitable for M20 Conduit

Flow rate measured with differential pressure at 2.5mbar

Kv = Flow rate measured with differential pressure at 2.5mbar

Flow Data



How to use the Flow Chart

1. Select the required flow.
2. Note the corresponding orifices/model and pressure drop.
3. Using orifices/model, (refer to the Features panel) for technical information

Morrel International S.r.l.

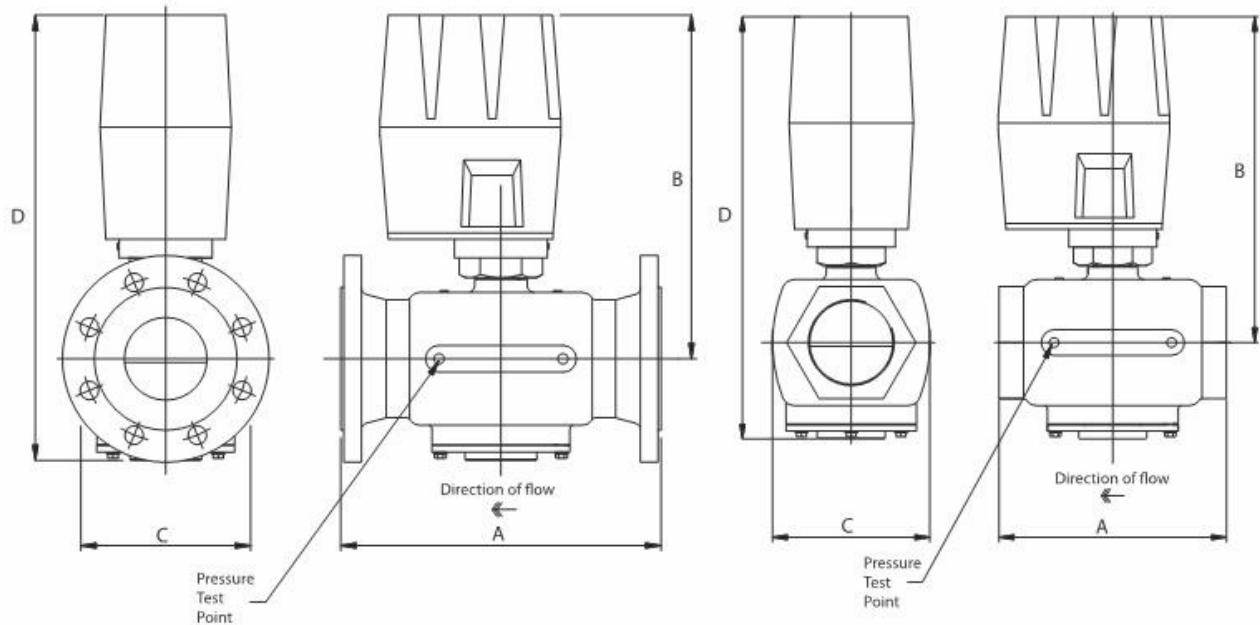
Tel. +39 023560433

Tel. +39 023560452

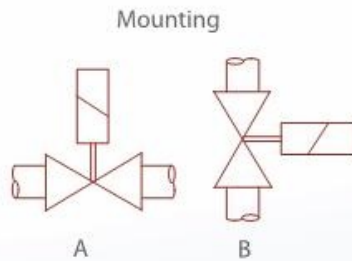
Fax +39 023562627

E-mail: morrel_int_srl@yahoo.it

HWA Series Normally Closed



Dimensions



Size	A	B	C	D
1¼"	149	294	127	368
1½"	149	294	127	368
2"	178	294	127	368
2" Flanged	230	314	127	392
2½"	238	324	159	419
2½" Flanged	290	328	159	423
3"	238	324	159	419
3" Flanged	310	328	159	423
4"	292	352	120	508
6"	356	380	178	560

Standard Flange Size PN6/16
all others screwed BS21

Morrel International S.r.l.

Tel. +39 023560433

Tel. +39 023560452

Fax +39 023562627

E-mail: morrel_int_srl@yahoo.it