

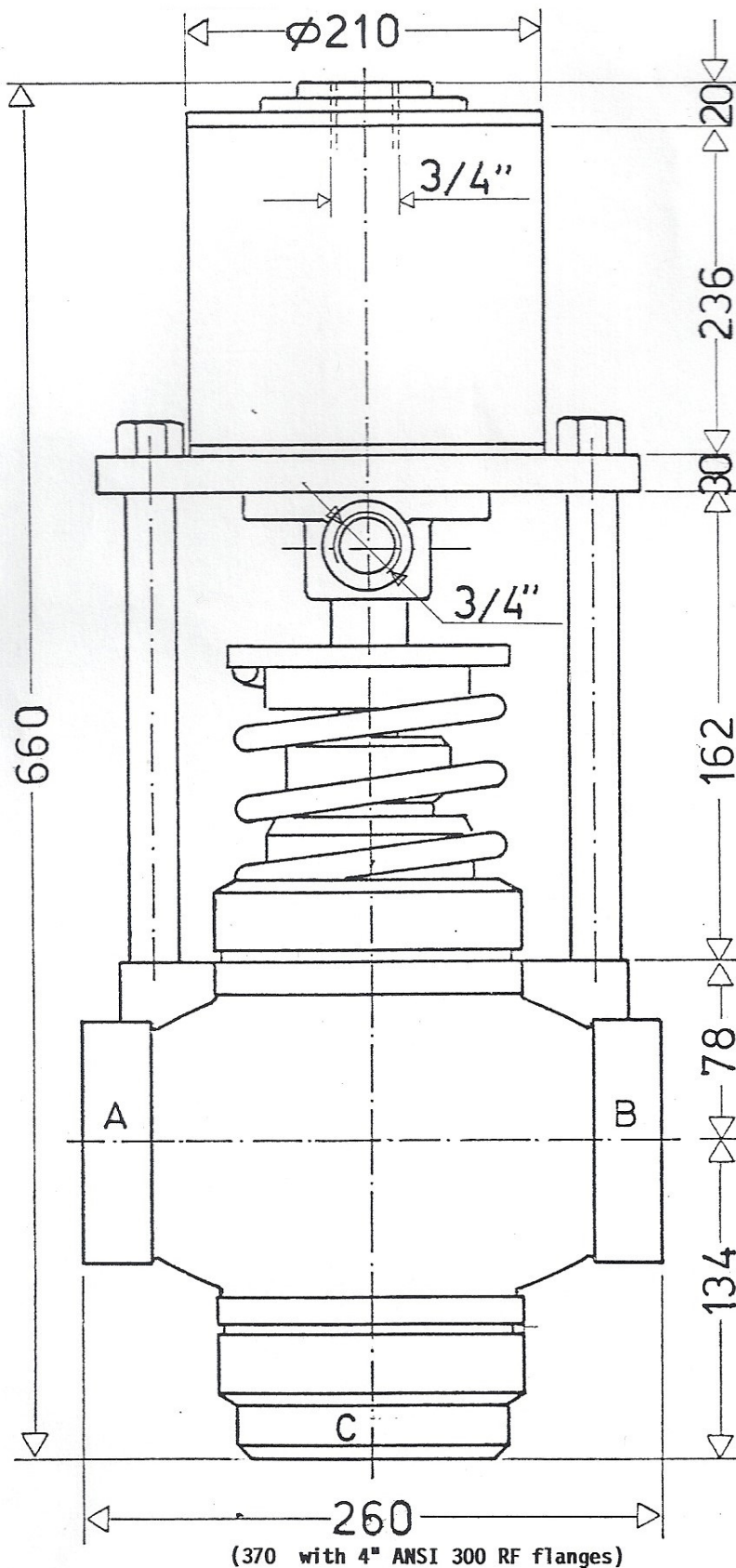
PNEUMATICALLY - OPERATED CUTOFF VALVES

MORREL INTERNATIONAL S.R.L.



Model DP/34503

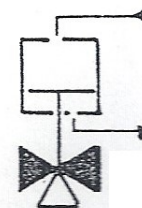
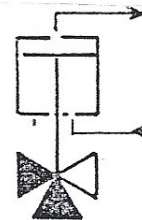
Table 136

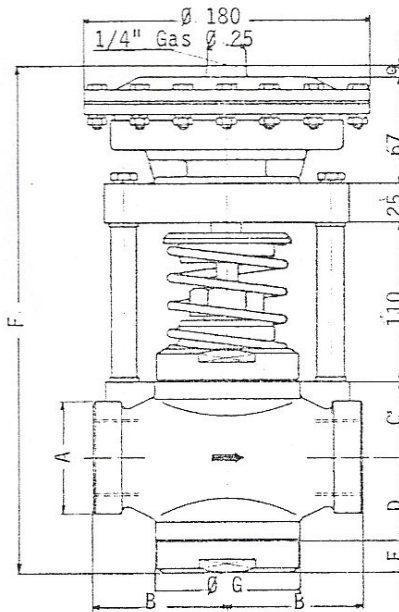
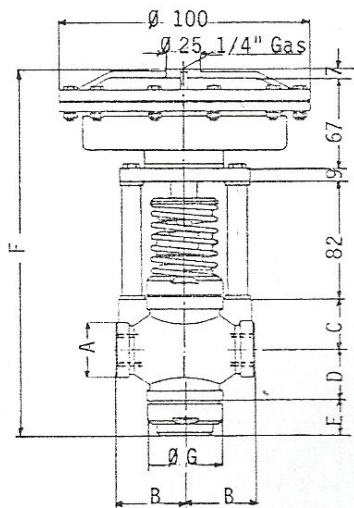


Specifications:

- Operating pressure 0 ÷ 40 BAR
- Pilot pressure 2 ÷ 10 BAR
- Max ratio between operating pressure and pilot pressure 4
- Operating temperature 180°
- Double acting air operator
- Bronze or stainless steel body
- Stainless steel stem
- PTFE gaskets
- Net orifice area 1400 mm²
- Connections threads 3" gas

OPERATING MODE





Morrel International S.r.l.
 Tel. +39 023584833
 Tel. +39 023584832
 Fax +39 02358627
 E-mail: morrel_int_srl@yahoo.it

Model	Connection Threads	Net orifice Area	KV	Operating Pressure Min. Kg/sq.cm. Max.	Fig.	Overall dimensions							
						A	B	C	D	E	F	G	
DP/2182	1/2" gas	180 mmq	50	2	8	1	38	50	35	35	22	257	54
DP/2302	3/4" gas	300 mmq	100	2	8	1	50	60	40	40	26	271	66
DP/2502	1" gas	500 mmq	150	2	8	1	50	60	40	40	26	271	66
DP/21402	1 1/2" gas	1400 mmq	310	2	10	2	70	85	52	56	20	339	91
DP/22002	2" gas	2000 mmq	600	2	10	2	86	95	63	67	20	361	100

Specification

Perfect air-tightness through the use of soft seal. Particularly rugged construction for heavy operating conditions. Wide internal orifice featuring a high flow factor.

Use

Operating pressure up to 40 BAR. Operating temperature up to 180 degrees C with PTFE seal for high-density, high-viscosity or corrosive fluids.

Operations

Stem travel is done by the diaphragm in one direction and by a high-load spring in the other. This arrangement ensures trouble free operation even in the case of high viscosity fluids. Valves are available as NC (normally closed,

air to open) or NA (normally open, air to close) operating mode.

Construction

Bronze or stainless steel body. Floating seal seat to compensate for axial misalignments. Nitril rubber, Viton, PTFE seals depending on controlled fluid. The diaphragm is in neoprene and hipalon-coated fabric.

Optionals

DPDT or SPDT limit switches to indicate valve open/closed position. Threaded, socket welding and flange connections. Actuating solenoid valves for direct conpling available (see table 302 version B).