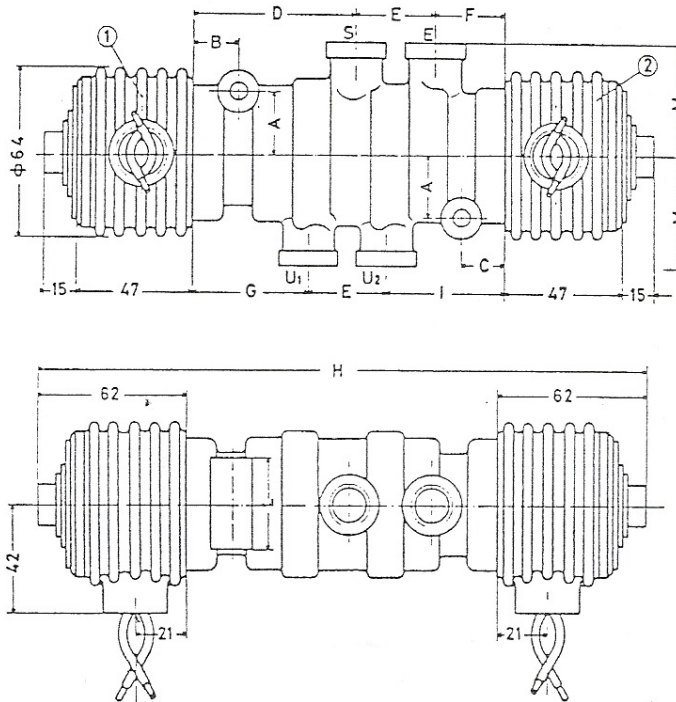


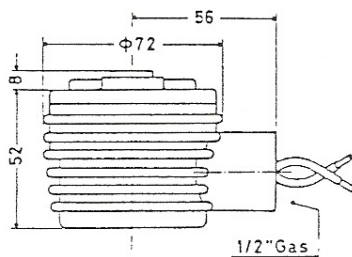
FOUR WAY INTERNAL PILOT SOLENOID VALVES

Model EI/452 ÷ 4302

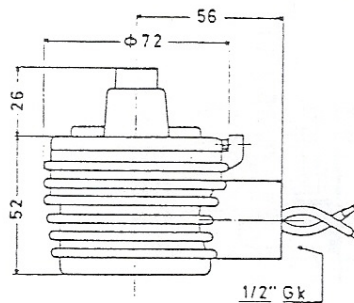
Table 430



Coil housings



Weather proof TS IP-55



Explosion proof EEXD

Model code	Connections	Net orifice area	Weight	kv	Overall dimensions										
					A	B	C	D	E	F	G	H	I	L	M
EI/452	1/4" gas	50 mmq.	3,1	16	24	23	23	69	33	31	50	257	50	36	43
EI/482	3/8" gas	80 mmq.	3,1	25	24	23	23	69	33	31	50	257	50	36	43
EI/4152	1/2" gas	150 mmq.	3,4	48	25	19	29	75	37	38	56	274	57	30	47
EI/4302	3/4" gas	300 mmq.	3,9	90	25	25	31	86	50	39	62	299	63	36	55

Specifications

The main characteristics of these valves for lubricated air only, are great strenght and fast action, over 1000 shifts for minute. Suitable for controlling double action air rams operating within 1.5 and 12 BAR. When solenoid 1 is energized, inlet E is connected with outlet U1 and outlet U2 is connected with exhaust S. valve maintains this operating mode even if there is a supply failure; connections are inverted only by energizing solenoid 2.

Constructive details

Bronze body, brass and st. st. internal parts
Buna-N seals, coil protection IP-40 according to IEC standards.

Electrical characteristics

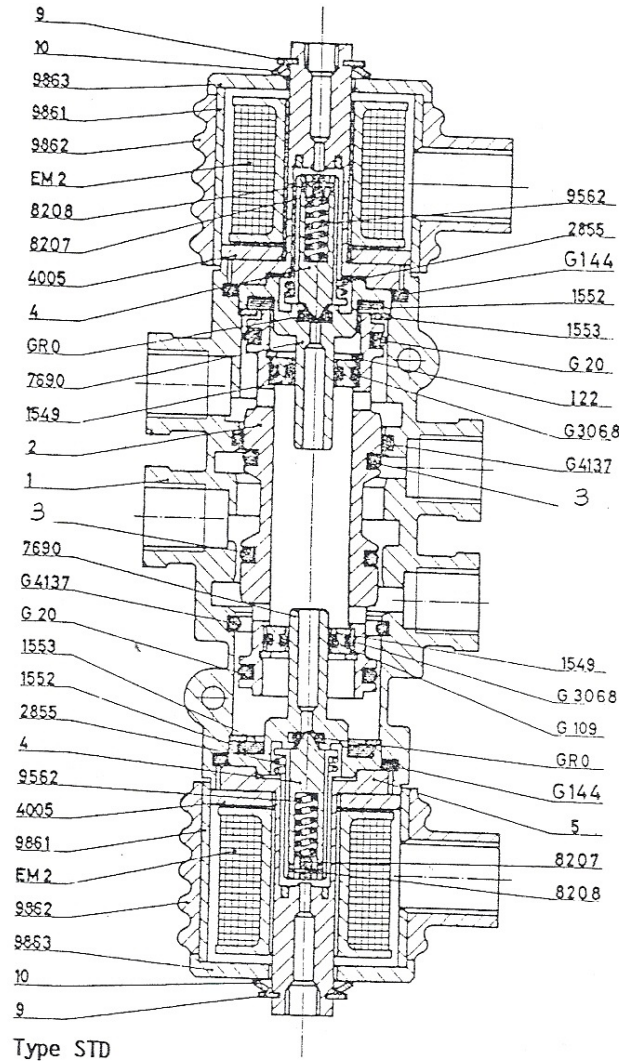
Solenoid coil made according to CEI standards with two coats enameled class H wire; available for direct current from 12 to 120 V, adsorbed power 12 W, or for alternating current from 12 up to 380 V, adsorbed power 15 VA (50 VA in-rush) for continuous service.

Optionals

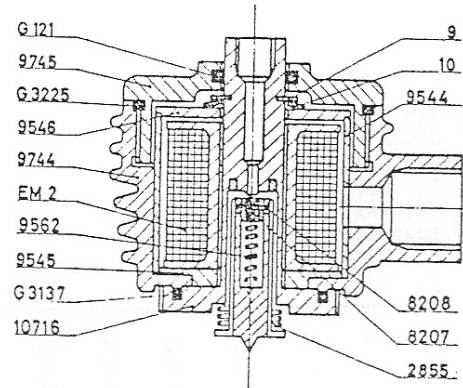
Viton seals - IP-55 waterproof solenoid enclosure - EEXD explosion proof solenoid enclosure according to CEI standards with CESI certificate for GR II B T5 n° AD.82-203- Condulets as in table 610.

Model EI/452 ÷ 4302

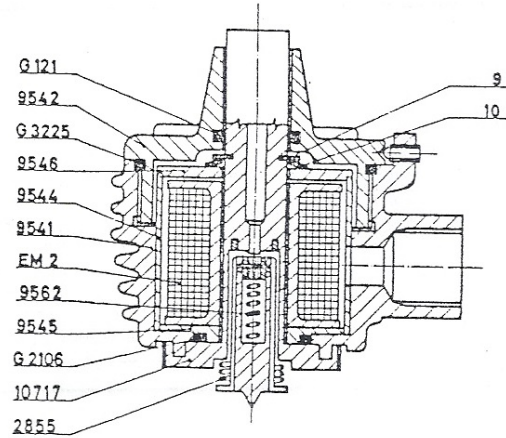
Table 430 A



Type STD



Type TS



Type EEXD

Nomenclature

1 - 1546	Body EI/452 - EI/482	9744	External EM2A TS skirt
1 - 1976	Body EI/4152	9862	External EM2A, STD skirt
1 - 1605	Body EI/4302	9542	EEXD skirt cover
2 - 1548	Stem EI/452 - EI/482	9745	TS skirt cover
2 - 1977	Stem EI/4152	9544	Internal EM2A EEXD - TS skirt
2 - 1607	Stem EI/4302	9545	Bottom washer EM2A EEXD - TS
4 - 10351	Moving core	9546	Top washer EM2A EEXD - TS
1549	Stem bushing	4005	Bottom washer EM2A STD
1552	Rubber buffer	9863	Top washer EM2A STD
1553	Bottom rubber buffer	G109	O-Ring seal
2855	Spring	G121	O-Ring seal
7690	Nozzle	3 - G134	O-Ring seal EI/4152 - 4302
8207	Core bushing	3 - G4112	O-Ring seal EI/452 - 482
8208	Core pin	G144	O-Ring seal
9562	Inside core spring	G3068	O-Ring seal
I22	Seeger	G3137	O-Ring seal
5 - 10717	Core guide EEXD	G3225	O-Ring seal
5 - 10716	Core guide TS - STD	G4137	O-Ring seal
9541	External EM2A EEXD skirt	EM2	Coil